

Francesc Zamora Mola studied interior architecture in Barcelona and then in San Francisco, where he honed his design skills working with innovative architecture firms. Currently, Mr. Zamora lives in Barcelona and applies his experience to writing and editing about design and architecture. He is the author of numerous architecture books, including *150 Best Mini Interior Ideas*, *Star Commercial Spaces*, and *150 Best New Apartment Ideas*.

Also from Harper Design



150 Best New Kitchen Ideas  
ISBN 978-0-06-239612-9



150 Best New Bathroom Ideas  
ISBN 978-0-06-239614-3

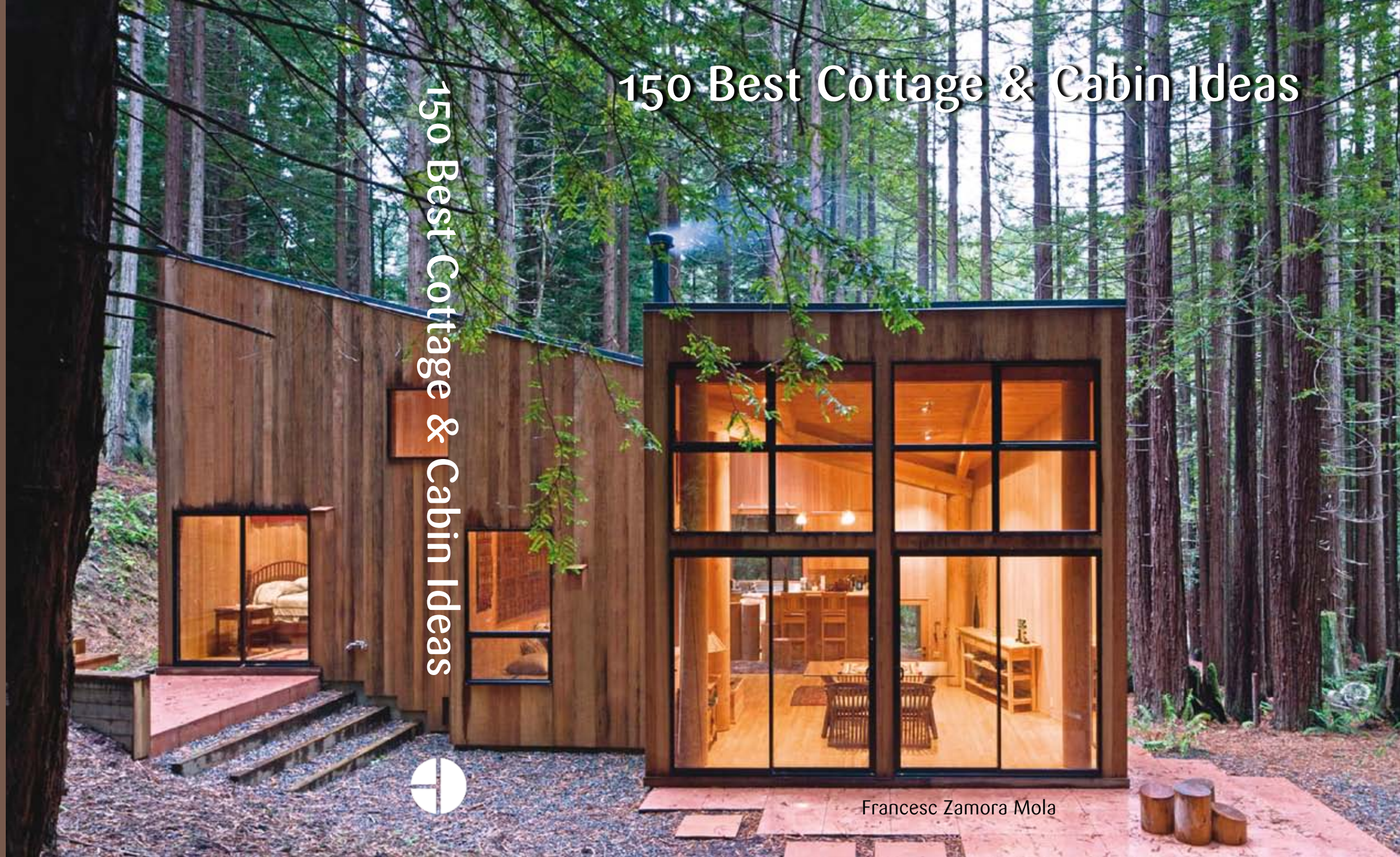
Front cover photograph © Domin Photography

Back cover photograph © Eric Rorer

Discover great authors, exclusive offers, and more at [hc.com](http://hc.com).

**HARPER DESIGN**  
An Imprint of HarperCollinsPublishers

 **HARPER DESIGN**  
An Imprint of HarperCollinsPublishers  
[www.harpercollins.com](http://www.harpercollins.com)



# 150 Best Cottage & Cabin Ideas

150 Best Cottage & Cabin Ideas



Francesc Zamora Mola

## 150 Best Cottage & Cabin Ideas

Way out in the wild and plenty of wood to build a dream retreat. This might have been true at the time of early pioneers and settlers. Nowadays, those rudimentary cottages and cabins, romanticized mainly by the movie industry, have become symbols of retreat, refuge, and a more or less rugged independent lifestyle.

The cottage and cabin concept has expanded to upgrade the limited comforts of the original constructions to the needs of our contemporary lifestyle. Modern cottages and cabins are spacious and comfortable, likely to include fully equipped kitchens, whirlpool tubs, saunas and other luxuries. They often have more than one floor, have a separate garage with a guest unit above, and are surrounded by terraces allowing interior activities to spill outside.

Contemporary lifestyle and modern construction may have revitalized the romantic idea of the original cottages and cabins, but has left intact the idyllic aura that make cottages and cabins so endearing to us all: the closeness to nature, remoteness and contemplation.



The site for SHIFT Cottage was chosen for its topography and orientation. Its location between a forested area and a rocky outcropping protects the cabin from the winds off a nearby lake. The low profile of the construction and its shape were designed so as not to compete with the surrounding landscape, but rather to highlight its unique beauty. A series of stepped decks gird the structure, easing its integration into the natural setting while facilitating access.

### **SHIFT Cottage**

**2,000 sq ft**

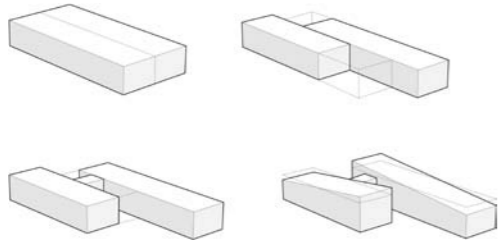
**superkül**

Georgian Bay, Ontario, Canada

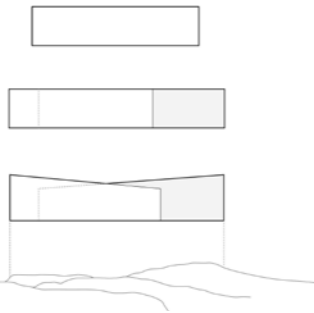
© Tom Arban



Site diagram



Massing diagram



Emplacement diagram



Site plan



Site images



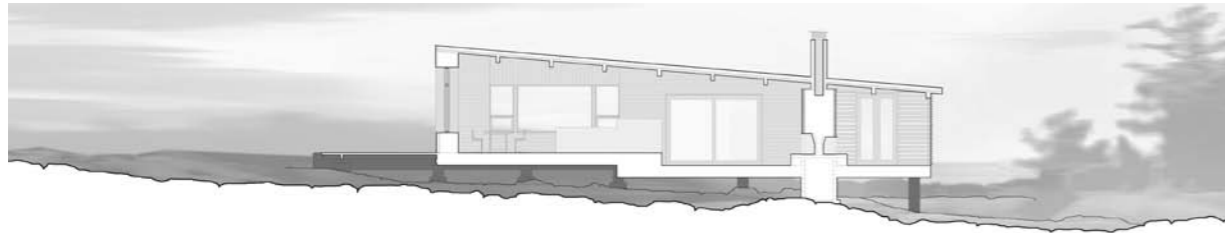
East elevation



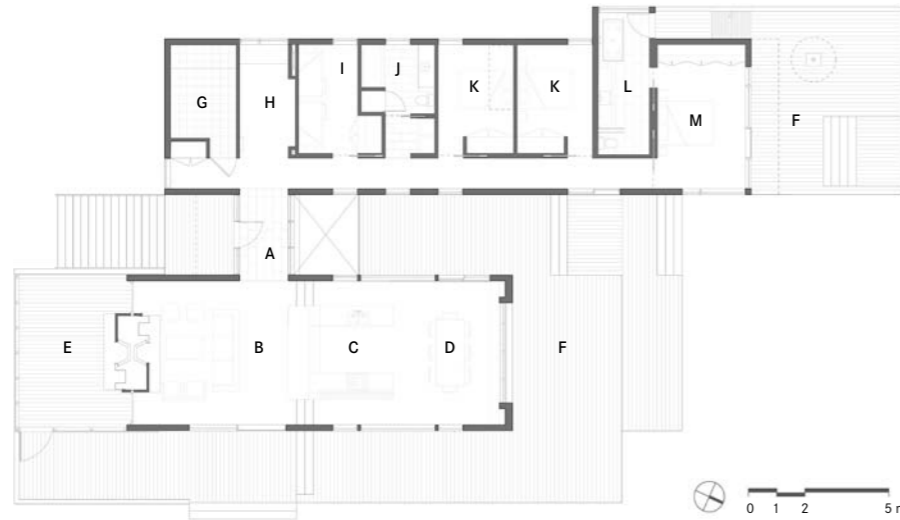
North elevation



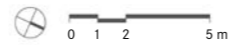
West elevation



East-West section



- A. Entry
- B. Living room
- C. Kitchen
- D. Dining area
- E. Screened outdoor terrace
- F. Outdoor terrace
- G. Utility
- H. Study
- I. Kids' bedroom
- J. Bathroom
- K. Bedroom
- L. Master bathroom
- M. Master bedroom



Floor plan



## 051

Let natural features guide your design to create a building that is respectful to the environment. Also take into consideration sun exposure, prevailing winds, and other meteorological variables that could affect the design.



The limited selection of materials, which include cedar cladding, metal roofing, and stone, reinforces the simplicity of the building, while the horizontal cedar siding, both on the exterior and the interior, emphasizes the low proportions.



052

Position buildings and orient rooms strategically in order to frame views and take full advantage of sun exposure.



All the rooms have access to outdoor terraces facing different directions, allowing comfortable daytime activities in an area that is otherwise characterized by a rough terrain.