

AZURE

DESIGN | ARCHITECTURE | INTERIORS | CURIOSITY

AZUREMAGAZINE.COM

MILAN FURNITURE FAIR

Top 30 debuts for 2015 p.100

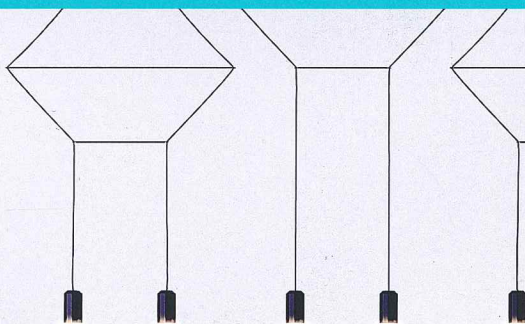
WHITNEY ON THE HIGH LINE

New York's hottest museum p.33

BRILLIANT BATHROOMS

40+ taps, tubs and tiles p.45

5TH



THE BEST IN
ARCHITECTURE /
INTERIORS / FURNITURE /
LIGHTING / LANDSCAPES /
CONCEPTS /
A+ STUDENT AWARD

ANNUAL

AZ



AWARDS

CAN/US \$8.95
JUL/AUG 2015
PM40048073 R09064
PRINTED IN CANADA





20

with Chris Barrie *moderno.ca*

20 CULTURE 01 / ROOM ON THE ROOF

Here's a studio virtually overflowing with inspiration: at the top of a historic tower in Amsterdam, this 16-square-metre artist-in-residence space playfully toys with scale, pushing all of the sleeping and living requirements into one vertical volume and leaving the rest as a blank canvas for creating art. The fort-like pinewood installation encompasses storage, a desk and a daybed stacked on top of each other and connected via ladders; an adjacent spiral staircase leads to a cupola above. Previous AZ Award winner i29 Interior Architects left the remaining stark white space as a flexible studio for visiting photographers, musicians and filmmakers. // **Location:** Amsterdam, the Netherlands **Firm:** i29 Interior Architects,

the Netherlands **Team:** Jeroen Dellensen, Jasper Jansen, Miklós Kroeze and Begoña Masia Albelda *i29.nl*

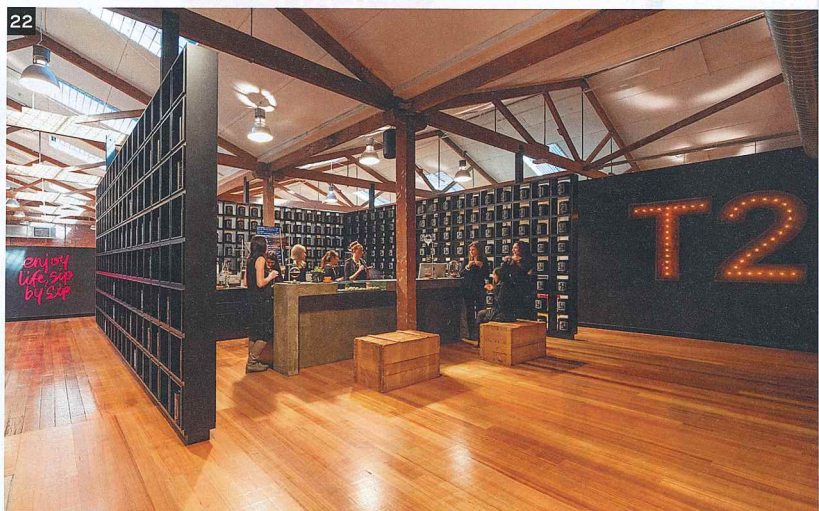
21 SARDINIA HOUSE

This white-walled vacation home in Sardinia, Italy, is skilfully linked to its surroundings, and not just by the sprawling two-storey terrace. Architect Pierluigi Piu's contemporary approach to the Mediterranean vernacular and his references to traditional arts and crafts add unique details. On the 164-square-metre lower floor, a textured limestone wall in the living room pays homage to a weaving style native to the island. Meanwhile, in a bedroom on the 112-square-metre upper floor, a carved ceramic wall installation is influenced by local jewellery and embroidery, and the bathroom tiles feature a relief pattern drawn from traditional carpets. // **Location:** Cagliari, Italy



21

PEOPLE'S
CHOICE
WINNER



22

Firm: Architetto Pierluigi Piu, Italy **Team:** Pierluigi Piu with Pedro Gaiolas Pinto and Ferruccio Sabiucco *pierluigipiu.it*

COMMERCIAL INTERIORS

22 T2 HEADQUARTERS

T2's new Melbourne premises look rather nondescript from the outside; the brick-clad industrial warehouse blends in seamlessly with the streetscape. But on the other side of an oversized steel pivot door and a set of concrete steps, the tea retailer's offices feel ambient and inviting. Along with the original brick, Landini Associates brought the timber beams and columns, the skylights and flooring back to life, juxtaposing them against moody lighting and dark-hued shelves of teas on display. The upper area, which houses the staff entrance, the CEO's office

and a tasting workshop, is a contrasting stark white. The result: dramatic but not flashy. // **Location:** Melbourne, Australia **Firm:** Landini Associates, Australia **Team:** Mark Landini *landiniassociates.com*

23 STEELCASE WORKLIFE

Atop a 24-storey tower in Toronto's financial district, Superkül set out to energize the showroom of furniture manufacturer Steelcase. The 936-square-metre penthouse, with its soaring seven-metre-high ceilings and ample glazing, had sat empty since the building opened 30 years ago. To maximize the narrow dimensions, the office was outfitted with fibreboard pods that show off various types of workspaces: classroom, teleconferencing area, lounge. These carve out gallery-like niches within an otherwise open plan where team members actually sit at the workstations they're selling to clients.



PEOPLE'S
CHOICE
WINNER



23



24

AWARDS OF MERIT



25



26

Location: Toronto, Canada **Firm:** Superkül, Canada **Team:** Andre D'Elia and Meg Graham with Anya Moryoussef, Sonia Ramundi and Larry Silva superkul.ca

24 SIBLEY HALL, CORNELL UNIVERSITY

To create architectural studios, faculty offices and teaching spaces that broadcast a collaborative, connected approach – and bring a historic building up to LEED Silver standard – New York firm Levenbetts opted for a nuanced dance between original features and innovative insertions. Two skylights were added, 41 aging windows replaced, the roof reinforced, the bathrooms renovated and an upgraded HVAC system installed. This was all accomplished via a palette of colours and materials (including reclaimed Douglas fir, frosted glass and steel plating) that blurs the line between new and old. **Location:**

Ithaca, New York, U.S. **Firm:** Levenbetts, U.S. **Team:** Stella Betts and David Leven with Andrew Feuerstein, Olivia Heung, Jason Hudspeth, Eamonn Kelly and Sam Weston levenbetts.com

FURNITURE DESIGN

25 AESYNC

Design studio E00S and manufacturer Keilhauer boast many groundbreaking collaborations, from the Sguig task chair to the Talk privacy loungers. Aesync, an elegant and understated conference chair, adds to that repertoire. An outward simplicity belies the technological innovation within: though the backrest and seat seem to flow into each other, the chair integrates a patent-pending mechanism to smoothly sync them when the sitter reclines. The precise placement of

pivots allows movements to be controlled via small springs, with no adjustments required – just sit back and relax. **Studio:** E00S, Austria **Designers:** Martin Bergmann, Gernot Bohmann and Harald Gründl **Manufacturer:** Keilhauer, Canada e00s.com, keilhauer.com

26 ZINTA

Talk about a customizable sofa. Designed by Lieve Altherr Molina for Arper, Zinta takes the basic elements of structure and padding, and deconstructs them so the client can specify any configuration desired. The lithe shell comes in wood veneer or laminate, in a range of finishes, lined with thin pads or thick cushions in a spectrum of vibrant and sophisticated shades. The steel base and aluminum trestle legs are painted in dark grey; plywood armrests can be added as well. **Studio:** Lieve Altherr Molina, Spain **Designers:** Jeannette Altherr, Alberto Lieve

and Manel Molina **Manufacturer:** Arper, Italy lievorealtherrmolina.com, arper.com

27 FREE HUG

Everyone needs a chair like this, especially after a tough day. Lee Eun Kyoung's spongy sofa has shaggy arms that extend to wrap cozily around the sitter, evoking the childhood comfort of a mother's hug or a stuffed animal. Whimsy is only part of its charm: the elongated pillows are also hard working, functioning as props for laptops and food trays or to support breast feeding. And they stretch out, gorilla-like, on the floor for casual lounging. **Designer:** Lee Eun Kyoung, South Korea leeunkyoung.com

FURNITURE SYSTEMS

28 BUZZPICNIC