

Architectural Record

**Renovation
Restoration
Adaptive Reuse**



bnp
media

02
2021

\$9.95

architecturalrecord.com

KITCHEN & BATH



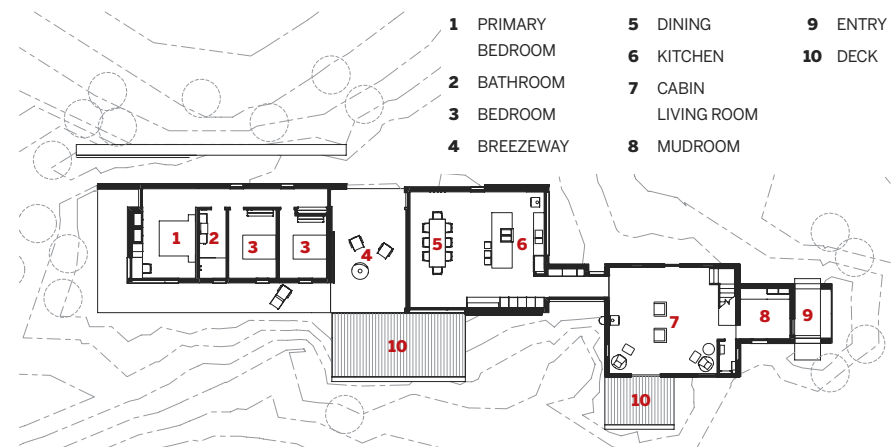
Woodhouse

Architect: superkül

BY SHEILA KIM

FOOD PROFESSIONALS demand a certain level of quality and functionality in the kitchens of their dining establishments. Some strive for similar setups in their homes. So, when Toronto-based superkül was asked to expand a local restaurateur's 1870s log cabin in Singhampton, Ontario, the architects took great care in creating a comfortable, efficient 550-square-foot cooking and dining zone for the client and his family within the annex.

The clients requested that the annex relate to the land, says superkül principal Andre D'elia. With this in mind, the architects built an elongated bar annex that stretches out onto the site, positioning its fenestration to frame views of the 90-acre property's open fields. The addition is undeniably modern, but tonally and materially it references the



FLOOR PLAN

historic structure's existing elements, including a wood stove, weathered exterior, and honey-toned timber interior.

"They were inspired by Scandinavian precedents that demonstrate a carefully orchestrated balance between function and refinement, without being too self-aware or precious," says D'elia. "They asked for clean,

simple lines that feel cozy and warm." To turn the new kitchen into the heart of the home, the architects placed the cooking and dining zones in the same lofty space, dominated by birch plywood, sealed concrete, and plenty of daylight. They achieved this infusion of sunshine by installing glazed doors and windows on three elevations, and canting

a bank of skylights within a vaulted section of the ceiling above the dining table.

Perhaps the real focus of the room is its wood-burning cast-iron stove, which echoes an existing unit in the adjacent log cabin. Aligned with a wall of base cabinets, the sink, and refrigerator, this updated hearth is visible from a corridor leading to three new bedrooms, drawing family members and visitors alike.

Continuing with the overall palette of the annex, the architects specified thin black porcelain for the countertops, wrapped the ventilation hood in black-painted steel, and designed custom blackened-steel recessed pulls for the cabinetry and appliance fronts. In addition to a cooktop, the 3-foot 10-inch-deep by 10-foot 6-inch-long island provides ample counter space for informal noshing. A blackened-steel receptacle built into the corner conveniently stashes logs for the stove. Alongside a wall of full-height cabinetry, a 6-foot 6-inch-wide niche is outfitted with an upholstered bench that has drawers underneath containing the family's favorite board games.

Glass doors on the kitchen's southwest corner open onto an outdoor deck and covered breezeway furnished with seating and a floating wood-burning fireplace that doubles as a pizza oven—a perfect hub for a family of active gourmands and their guests. ■



Credits

ARCHITECT: superkül

ENGINEERS: Moses Structural, Bowser Technical

GENERAL CONTRACTOR: Jamie Korthals Construction

CONSULTANTS: Coates Creek Millwork

CLIENT: Robert Wilder and Jacqueline Rothstein

SIZE: 550 square feet (kitchen); 1,660 square feet (entire annex)

COST: withheld

COMPLETION DATE: November 2019

Sources

WINDOWS: Tiltco

DOORS: Tiltco and custom

SKYLIGHTS: Velux

COUNTERTOPS: Laminam

CHAIRS: Design Within Reach

TABLE: mjölk

UPHOLSTERY: Kai Leather

LIGHTING: Gabriel Ross (pendant); RAB Design Lighting (downlights)

SINK: Kohler

FAUCET: Delta

REFRIGERATOR: Fisher & Paykel

DISHWASHER: Miele



Black surfaces and hardware provide a dramatic contrast to whitewashed birch plywood (opposite and top). The kitchen/dining room opens to the outside via glass sliding doors (above, right). A glazed corridor connects the kitchen and new annex to the old log cabin (above, left).